



**TRITTON RESOURCES PTY LTD**

ABN 88 100 095 494

# Rehabilitation Management Plan

for the

# Tritton Copper Mine



*Prepared by:*



**RWCorkery&co**

May 2024



## ACKNOWLEDGEMENT

*R.W. Corkery & Co. acknowledge and pay our respects to the Traditional Custodians of the lands in NSW and Australia on which our projects are located. We value the knowledge, advice and involvement of the Elders and extended Aboriginal community that contribute to our Projects and extend our respect to all Aboriginal and Torres Strait Islander peoples.*





# TRITTON RESOURCES PTY LTD

ABN 88 100 095 494

## Rehabilitation Management Plan

for the

## Tritton Copper Mine

---

**Prepared for:**

Tritton Resources Pty Ltd  
ABN: 88 100 095 494

Yarrandale Road  
HERMIDALE NSW 2831

Telephone: (02) 6838 1100  
Email: [info@aerisresources.com.au](mailto:info@aerisresources.com.au)

---

**Prepared by:**

**R.W. Corkery & Co. Pty. Limited**  
Geological & Environmental Consultants  
ABN: 31 002 033 712

Telephone: (02) 9985 8511  
Email: [admin@rwcorkery.com](mailto:admin@rwcorkery.com)  
Postal: PO Box 1796  
CHATSWOOD NSW 2057

**Sydney | Orange | Townsville**

**Sydney**  
Suite 12.01, 1-5 Railway Street  
CHATSWOOD NSW 2067

**Orange**  
62 Hill Street  
ORANGE NSW 2800

---

Ref No. 440/20

May 2024

## Summary Table

<b>Name of Mine</b>		Tritton Copper Mine		
<b>RMP Commencement Date</b>		2 August 2022		
<b>Mineral Authorities</b>		ML1544	<b>Expiry Date</b>	21 December 2028
<b>Name of Leaseholder</b>		Tritton Resources Pty Ltd		
<b>Version</b>	<b>Author</b>	<b>Purpose</b>	<b>Approved by</b>	<b>Date of Submission</b>
1	RWC (M. Fake)	Draft Issued to Resources Regulator for Reference	Q. Brewer (Aeris)	15/06/2023
2	RWC (M. Fake)	Final draft for website		

**This Copyright is included for the protection of this document**

### COPYRIGHT

© R.W. Corkery & Co. Pty Limited 2024  
and  
© Tritton Resources Pty Ltd 2024

All intellectual property and copyright reserved.

Apart from any fair dealing for the purpose of private study, research, criticism or review, as permitted under the Copyright Act, 1968, no part of this report may be reproduced, transmitted, stored in a retrieval system or adapted in any form or by any means (electronic, mechanical, photocopying, recording or otherwise) without written permission. Enquiries should be addressed to R.W. Corkery & Co. Pty Limited.

# CONTENTS

Page

<b>LIST OF ACRONYMS.....</b>	<b>VI</b>
<b>1. INTRODUCTION TO MINING PROJECT .....</b>	<b>1</b>
1.1 HISTORY OF OPERATIONS.....	4
1.1.1 Mining Activities .....	4
1.1.2 Rehabilitation .....	6
1.2 CURRENT DEVELOPMENT CONSENTS, LEASES AND LICENCES .....	6
1.3 LAND OWNERSHIP AND LAND USE.....	7
1.3.1 Land Ownership and Land Use Figures .....	8
<b>2. FINAL LAND USE .....</b>	<b>3</b>
2.1 REGULATORY REQUIREMENTS FOR REHABILITATION.....	3
2.2 FINAL LAND USE OPTIONS ASSESSMENT .....	3
2.3 FINAL LAND USE STATEMENT .....	3
2.4 FINAL LAND USE AND MINING DOMAINS .....	4
2.4.1 Final Land Use Domains.....	16
2.4.2 Mining Domains .....	16
<b>3. REHABILITATION RISK ASSESSMENT .....</b>	<b>19</b>
<b>4. REHABILITATION OBJECTIVES AND REHABILITATION COMPLETION CRITERIA .....</b>	<b>33</b>
4.1 REHABILITATION OBJECTIVES AND REHABILITATION COMPLETION CRITERIA.....	33
4.2 REHABILITATION OBJECTIVES AND REHABILITATION COMPLETION CRITERIA – STAKEHOLDER CONSULTATION .....	33
<b>5. FINAL LANDFORM AND REHABILITATION PLAN.....</b>	<b>40</b>
5.1 FINAL LANDFORM AND REHABILITATION PLAN .....	40
<b>6. REHABILITATION IMPLEMENTATION .....</b>	<b>43</b>
6.1 LIFE OF MINE REHABILITATION SCHEDULE .....	43
6.2 PHASES OF REHABILITATION AND GENERAL METHODOLOGIES .....	48
6.2.1 Active Mining.....	48
6.2.2 Decommissioning.....	65
6.2.3 Landform Establishment .....	72
6.2.4 Growth Medium Development .....	76
6.2.5 Ecosystem and Land Use Establishment .....	77
6.2.6 Ecosystem and Land Use Development.....	82
6.3 REHABILITATION OF AREAS AFFECTED BY SUBSIDENCE.....	84
<b>7. REHABILITATION QUALITY ASSURANCE PROCESS .....</b>	<b>85</b>
<b>8. REHABILITATION MONITORING PROGRAM .....</b>	<b>87</b>
8.1 ANALOGUE SITE BASELINE MONITORING .....	87
8.2 REHABILITATION ESTABLISHMENT MONITORING .....	90

# CONTENTS

Page

8.3	MEASURING PERFORMANCE AGAINST REHABILITATION OBJECTIVES AND REHABILITATION COMPLETION CRITERIA .....	92
<b>9.</b>	<b>REHABILITATION RESEARCH AND TRIALS .....</b>	<b>93</b>
9.1	CURRENT REHABILITATION RESEARCH AND TRIALS .....	93
9.1.1	Minor Rehabilitation Trials .....	93
9.2	FUTURE REHABILITATION RESEARCH AND TRIALS .....	93
9.2.1	Seed Collection and Procurement Strategy .....	93
9.2.2	Post-Closure Water Management Strategy .....	94
9.2.3	Land Contamination and Hazard Assessment .....	94
9.2.4	Tailings Storage Facility Capping Detailed Design .....	95
9.2.5	Landform Modelling .....	96
9.2.6	Other research and trials .....	96
<b>10.</b>	<b>INTERVENTION AND ADAPTIVE MANAGEMENT .....</b>	<b>97</b>
10.1	THREATS TO REHABILITATION .....	97
10.2	TRIGGER ACTION RESPONSE PLAN .....	97
<b>11.</b>	<b>REVIEW AND IMPLEMENTATION .....</b>	<b>104</b>
<b>12.</b>	<b>REFERENCES .....</b>	<b>105</b>

## APPENDICES

Appendix 1 Consultation Letter

Appendix 2 Advice from O’Kane re. Heap Leach Pads

Appendix 3 Rehabilitation Risk Control Checklist – Tritton Copper Operations

## FIGURES

Figure 1	Locality Plan and Mineral Authorities .....	3
Figure 2	Existing Mine Site Layout .....	5
Figure 3	Land Ownership and Residence .....	9
Figure 4	Surrounding Land Uses .....	10
Figure 5	Vegetation Communities .....	1
Figure 6	Land Zoning .....	2
Figure 7	Final Landuse Domains .....	17
Figure 8	Mining Domains .....	18
Figure 9	Rehabilitation Monitoring Sites .....	89

# CONTENTS

	<b>Page</b>
<b>TABLES</b>	
Table 1	Consents, Leases and Licenses ..... 6
Table 2	Land Ownership ..... 8
Table 3	Regulatory Requirements for Rehabilitation ..... 5
Table 4	Final Land Use Domains ..... 16
Table 5	Mining Domains ..... 16
Table 6	Tritton Consequence Table ..... 20
Table 7	Qualitative Likelihood Rating ..... 21
Table 8	Qualitative Risk Rating ..... 21
Table 9	Residual Risk Level Action ..... 22
Table 10	Rehabilitation Risk Assessment ..... 23
Table 11	Community Consultation Activities ..... 33
Table 12	Proposed Rehabilitation Objectives and Proposed Rehabilitation Completion Criteria ..... 35
Table 13	Non-Production Waste Management ..... 57
Table 14	Tailings Characterisation Test Results ..... 61
Table 15	Requirements for Infrastructure to be Removed or Demolished ..... 66
Table 16	Requirements for Infrastructure to be Retained ..... 68
Table 17	Water Management Infrastructure ..... 73
Table 18	Regional Climate Statistics ..... 77
Table 19	Murrumbidgee Copper Mine Rehabilitation Species List ..... 80
Table 20	Key Roles and Responsibilities ..... 85
Table 21	Analogue Reference Sites ..... 88
Table 22	Trigger Action Response Plan ..... 98
Table 23	Rehabilitation Management Plan Amendment / Review Triggers ..... 104
<b>PLANS</b>	
Plan 1	Final Landform Features ..... 41
Plan 2	Final Landform Contours ..... 42
Plan 3	2024 to 2026 ..... 45
Plan 4	2026 - 2028 ..... 46
Plan 5	2028 to 2030 ..... 47

## List of Acronyms

AHD	Australian Height Datum
BOM	Bureau of Meteorology
CCC	Community Consultative Committee
DA	Development Approval
DPE	Department of Planning and Environment
DRE	Division of Resources and Energy
EIS	Environmental Impact Statement
EPA	Environment Protection Authority
EPL	Environment Protection Licence
EP&A Act	<i>Environmental Planning and Assessment Act 1979</i>
GCC	Girilambone Copper Company
ML	Mining Lease
MOP	Mining Operations Plan
MPL	Mining Purpose Lease
NAF	Non-Acid Forming
PAF	Potentially Acid Forming
POEO Act	<i>Protection of the Environment Operations Act 1997</i>
ROM	Run-Of-Mine
SoEE	Statement of Environmental Effects
TARP	Trigger Action Response Plan



# 1. Introduction to Mining Project

This *Rehabilitation Management Plan* (RMP) has been prepared by R.W. Corkery & Co. Pty. Limited (RWC) on behalf of Tritton Resources Pty Ltd (the “Company”), a wholly owned subsidiary of Aeris Resources Limited (Aeris), for the Tritton Copper Mine (the “Mine”). The Mine is located approximately 22km southwest of the village of Girilambone and approximately 45km northeast of the town of Nyngan (**Figure 1**). The principal mineral authority for the Mine is Mining Lease (ML) 1544. For the purpose of this document, the area covered by ML1544 is referred to as the “Mine Site” (see **Figures 1 and 2**).

The Mine is one of four operational mines within the vicinity of Girilambone that are owned and operated by the Company, collectively referred to as the Tritton Copper Operations. For the purposes of this RMP, the Tritton Copper Operations consists of:

- the Tritton Copper Mine;
- the Murrawombie Copper Mine;
- the North East Copper Mine; and
- the Avoca Tank Mine,

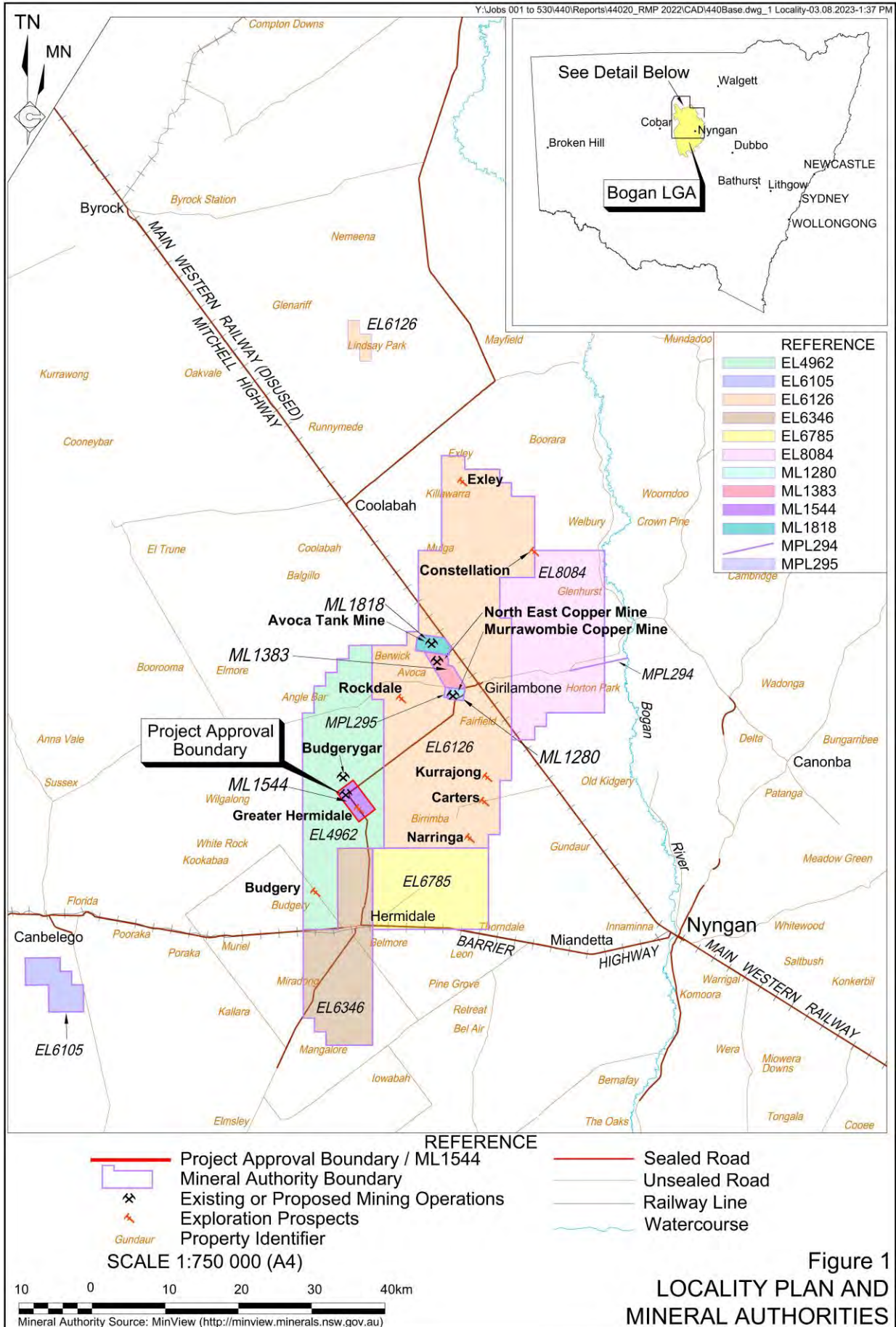
In general, all mines within Tritton Copper Operations are managed in parallel where practicable; as such, many existing assessments, approvals, and management plans may apply to multiple or all mines within the Tritton Copper Operations. This RMP relates only to the management of rehabilitation within the Mine Site (i.e. the Tritton Copper Mine).

The RMP is intended to provide a summary of current plans for progressive and final rehabilitation of the Mine Site and a practical guide to rehabilitation planning for site personnel. The RMP provides the following information.

- Introduction to the Mine (Section 1).
- Final land use information including regulatory requirements (Section 2).
- A summary of the current rehabilitation risk assessment outcomes (Section 3).
- A statement of the Company’s rehabilitation objectives and the completion criteria that must be satisfied before rehabilitation is considered complete (Section 4).
- Final landform plans (Section 5).
- An overview of the planned implementation of progressive and final rehabilitation (Section 6).
- A summary of how rehabilitation quality will be maintained (Section 7).
- An overview of intended rehabilitation monitoring (Section 8) and ongoing research and trials (Section 9).
- A summary of the Company’s management approach including a trigger action response plan (Section 10) and procedures for review and update of the plan (Section 11).

This RMP has been prepared in accordance with the following documents and guidelines.

- *Form and Way: Rehabilitation Management Plan for Large Mines (July 2021).*
- *Form and Way: Rehabilitation Objectives, Rehabilitation Completion Criteria and Final Landform and Rehabilitation Plan for Large Mines (July 2021).*
- *Guideline 1: Rehabilitation Risk Assessment (July 2021).*
- *Guideline 2: Rehabilitation Records (July 2021).*
- *Guideline 3: Rehabilitation Controls (July 2021).*
- *Guideline 5: Rehabilitation Objectives and Rehabilitation Completion Criteria (July 2021).*



## 1.1 History of Operations

### 1.1.1 Mining Activities

#### Historical Mining Activities

The Girilambone copper deposits were first discovered in 1879 with mining commencing in the vicinity of what is now the Girilambone village in 1881. Mining of other known deposits such as Budgerygar and Budgery (see **Figure 1**) occurred throughout 1906 to 1908 and 1920, respectively. Other minor historical mining operations are known to have occurred sporadically throughout the 20<sup>th</sup> century. Several other historic mining areas are known to be located throughout the area.

The Girilambone Copper Company (GCC), a Joint Venture between Tritton Resources Pty Ltd (60%) and Nord Pacific Ltd (40%) was formed in 1992, following development of the (then) Girilambone Copper Mine (now the Murrawombie Copper Mine), to undertake mineral exploration within relatively close proximity to the existing mine.

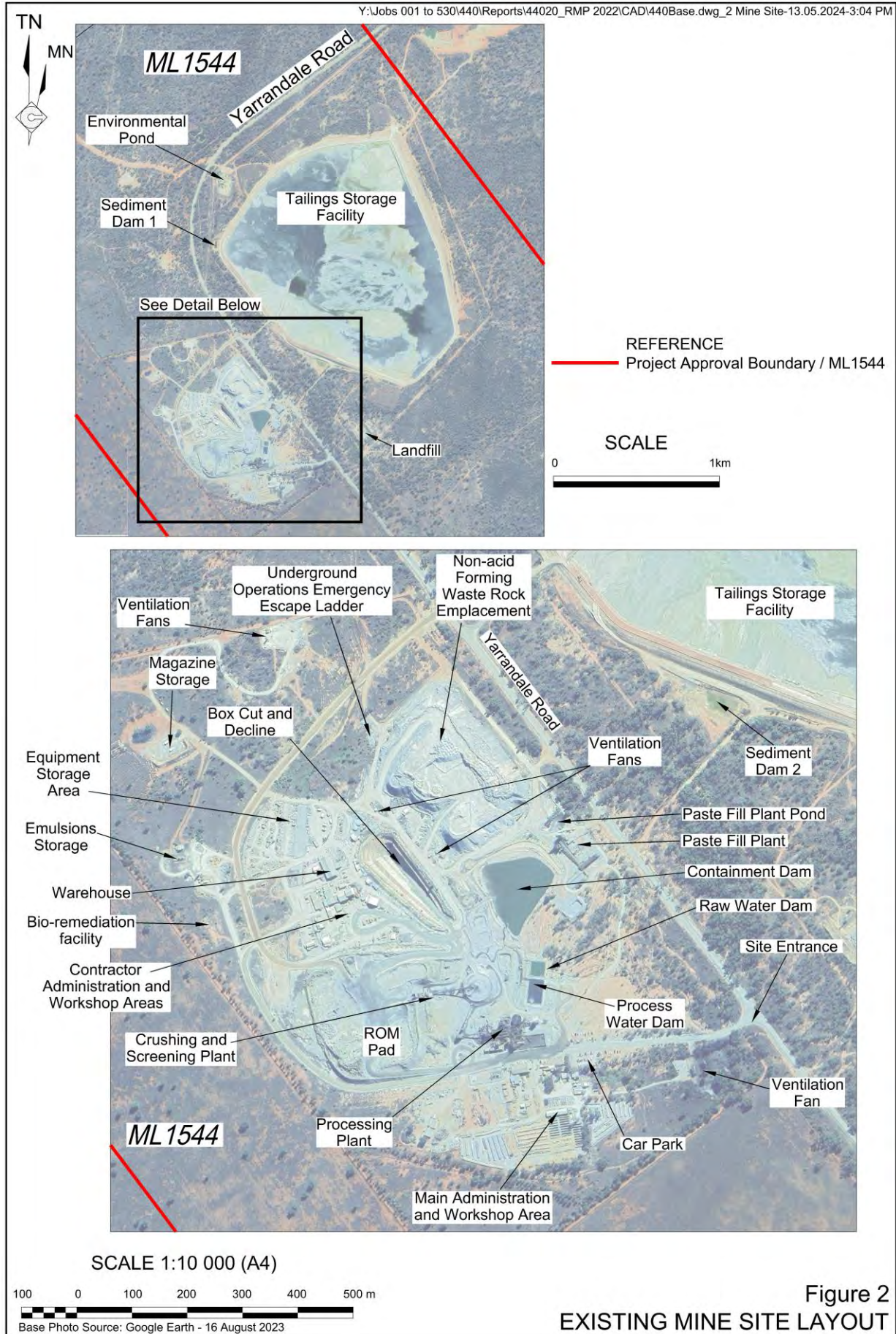
#### The Tritton Copper Mine

The mineralisation at the Mine Site was discovered in 1995. Following a series of preliminary assessments and preparation of an *Environmental Impact Statement*, Development Consent (DA) 41/98 was approved on 1 September 1999 by the Minister for Planning and Urban Affairs. Mining operations under DA 41/98 are approved until 21 December 2028. ML 1544 was issued by the former Department of Mineral Resources on 22 December 2003.

The current layout of the Mine Site is provided in **Figure 2**. The approved operations under DA 4/98 include the following.

- Extraction of copper ore using underground mining techniques.
- Construction and use of a Non-acid Forming Waste Rock Emplacement to a maximum height of 30m above the natural surface or approximately 301m AHD.
- Importation of no more than 1Mt of copper ore in a calendar year for processing at the Mine Site.
- Processing of on-site and imported copper ore to produce a copper concentrate.
- Export of no more than 30,000 tonnes of waste rock from the Mine Site in a calendar year, generally for the purposes of local road construction and maintenance.
- Transportation of the copper concentrate in shipping containers to the Hermidale rail siding, located approximately 19km to the south of the Mine Site, and transportation of that material by train to port for export.
- Construction and use of a Tailings Storage Facility.





### 1.1.2 Rehabilitation

To date all areas of the Mine Site remain active mining areas and only minor rehabilitation of the embankments of the Tailings Storage Facility (TSF) has commenced. Areas such as the TSF, Waste Rock Emplacement (WRE) and processing hardstand, will be rehabilitated progressively where available and/or at mine closure.

Progressive hydroseeding of the TSF embankment has occurred during operations, including 2.5ha in 2009, and 0.4ha in 206 and 2018. In 2021 the Company hydroseeded 0.5ha of the northern TSF embankment. In 2020, the Company modified its hydroseeding approach (to that applied in 2018) based on advice from its restoration ecologist. The modifications included maintaining dozer rip lines following soil amelioration (addition of gypsum) and trial the addition of biological resources. Previously dozer rip lines were tracked-in to provide a smooth surface for the hydromulch to ensure maximum coverage. It is anticipated that maintaining the rip lines and the addition of retained timber logs will accelerate ecological function and stability.

## 1.2 Current Development Consents, Leases and Licences

Table 1 presents the current consents, leases and licences for the Mine.

**Table 1**  
**Consents, Leases and Licenses**

Page 1 of 2

Consent, Lease or Licence	No.	Issue Date	Expiry Date	Comment(s)
Development Consent	41/98	1/9/1999	N/A	Tritton Project Development
	029/2007	25/5/2007	N/A	Tritton new office block and bath house
	2010/006	25/05/2010	13/9/2015	Construction of a Paste Fill Plant
	2010/028	04/11/10	04/11/2015	Communication Tower
	10/2019/021/001	15/01/2020	15/01/2025	Construction and use of Water Pipeline.
	CDC2021/002	06/04/2021	06/04/2026	New Telecommunication Tower.
Development Consent Modifications	41/98 MOD1	26/08/2004	22/12/2024	Increased mining schedule and extended life of mine.
	41/98 MOD2	22/09/2005	22/12/2024	Tailings Storage Facility Construction.
	41/98 MOD3	19/06/2007	22/12/2024	Waste Rock Emplacement Construction.
	41/98 MOD4	19/12/2007	22/12/2024	Expansion of the Tritton Copper Mine Processing Plant and Tailings Storage Facility.
	41/98 MOD5	07/04/2015	22/12/2024	Waste Rock Emplacement construction, mineral ore import and export of crushed waste rock.
	41/98 MOD6	30/01/2019	21/12/2024	Excavation and exportation of tailings from Tailings Storage Facility for use in the Paste Fill Plant at the Murrawombie Copper Mine.
	41/98 MOD7	12/10/2021	21/12/2024	Construction of two ventilation rises to support underground exploration activities.

**Table 1 (Cont'd)**  
**Consents, Leases and Licenses**

Page 2 of 2

Consent, Lease or Licence	No.	Issue Date	Expiry Date	Comment(s)
Development Consent Modifications (Cont'd)	41/98 MOD8	02/06/2022	21/12/2028	Various modifications, including underground mining of the Budgerygar deposit and installation of ancillary surface infrastructure, approximate 10m raise to the existing approved Waste Rock Emplacement, disposal of the materials within the Tailings Storage Facility and an extension to the Mine life until 21 December 2028.
Exploration Licence	EL4962	19/03/1996	19/03/2028	Exploration Activities.
Mining Lease	ML1544	22/12/2003	22/12/2024	Mining Activities.
Water Access Licence	WAL 009374	24/02/2005	Perpetuity	Water Licence.
	WAL 009375	24/02/2005	Perpetuity	
	WAL009940	01/07/2004	Perpetuity	
	WAL 31090	30/07/2006	Perpetuity	Dewatering Underground Mine.
Water Use and Works Approval	80WA702816	24/02/2005	23/02/2020	Gunningbar Creek and Bogan River Pumps.
	80WA716044	16/01/2012	28/05/2017	Dewatering Underground Mine.
Authority for Joint Supply Scheme	80SAD10630	24/02/2005	Ongoing	Joint Supply Works Pumps on Bogan River.
Water Bore Licence	80BL 239188	04/01/2001	Perpetuity	Tailings Storage Facility Monitoring Bores.
	80BL 239189	04/01/2001	Perpetuity	
	80BL 239190	04/01/2001	Perpetuity	
	80BL 239191	04/01/2001	Perpetuity	
	80BL 239192	04/01/2001	Perpetuity	
	80BL 239193	04/01/2001	Perpetuity	
	80BL 239194	04/01/2001	Perpetuity	
	80BL 245969	25/06/2010	Perpetuity	

Source: Tritton Resources Pty Ltd

### 1.3 Land Ownership and Land Use

**Table 2** presents the land ownership for land within Mine Site. Land within the Mine Site is predominantly freehold land owned by the Company and a Private landowner, with some Crown land comprising a Travelling Stock Route and the Yarrandale Road reserve. **Figure 3** presents the land ownership surrounding the Mine Site.

Current land uses within and surrounding the Mine Site include the following (displayed on **Figure 4**).

- Mining activities.
- Agriculture, principally wheat cropping and sheep and cattle grazing.
- Transportation, namely Yarrandale Road.



**Table 2**  
**Land Ownership**

Lot	Deposited Plan	Tenure	Owner	Leases
<b>Mine Site</b>				
61	875925	Freehold	Tritton Resources Pty Limited	ML 1544
41	879206	Freehold	Tritton Resources Pty Limited	ML 1544
62	875925	Freehold	Private Individual	ML 1544
42	879206	Freehold	Private Individual	ML 1544
7321	1160810	Crown Land	The State of NSW	ML 1544
7320	1160810	Crown Land	The State of NSW	ML 1544
7319	1160810	Crown Land	The State of NSW	ML 1544
7004	1126793	Crown Land	The State of NSW	ML 1544
13	751346	Crown Land	The State of NSW	ML 1544
7318	1160810	Crown Land	The State of NSW	ML 1544
14	751346	Freehold	Straits Mining Pty Limited	ML 1544
<b>Land Adjacent to the Mine Site</b>				
1	751346	Freehold	Private Individual	ML 1544
1, 3, 8	751308	Freehold	Private Individual	ML 1544
1, 8	751327	Freehold	Private Individual	ML 1544
6	751327	Freehold	Private Individual	ML 1544
8	751346	Freehold	Dom-Pat Holding Pty Ltd	ML 1544
9	751346	Freehold	Straits Mining Pty Limited	ML 1544
7	751346	Freehold	Private Individual	ML 1544
22	751322	Freehold	Private Individual	ML 1544
23	751322	Freehold	Private Individual	ML 1544
6	751312	Freehold	Private Individual	ML 1544

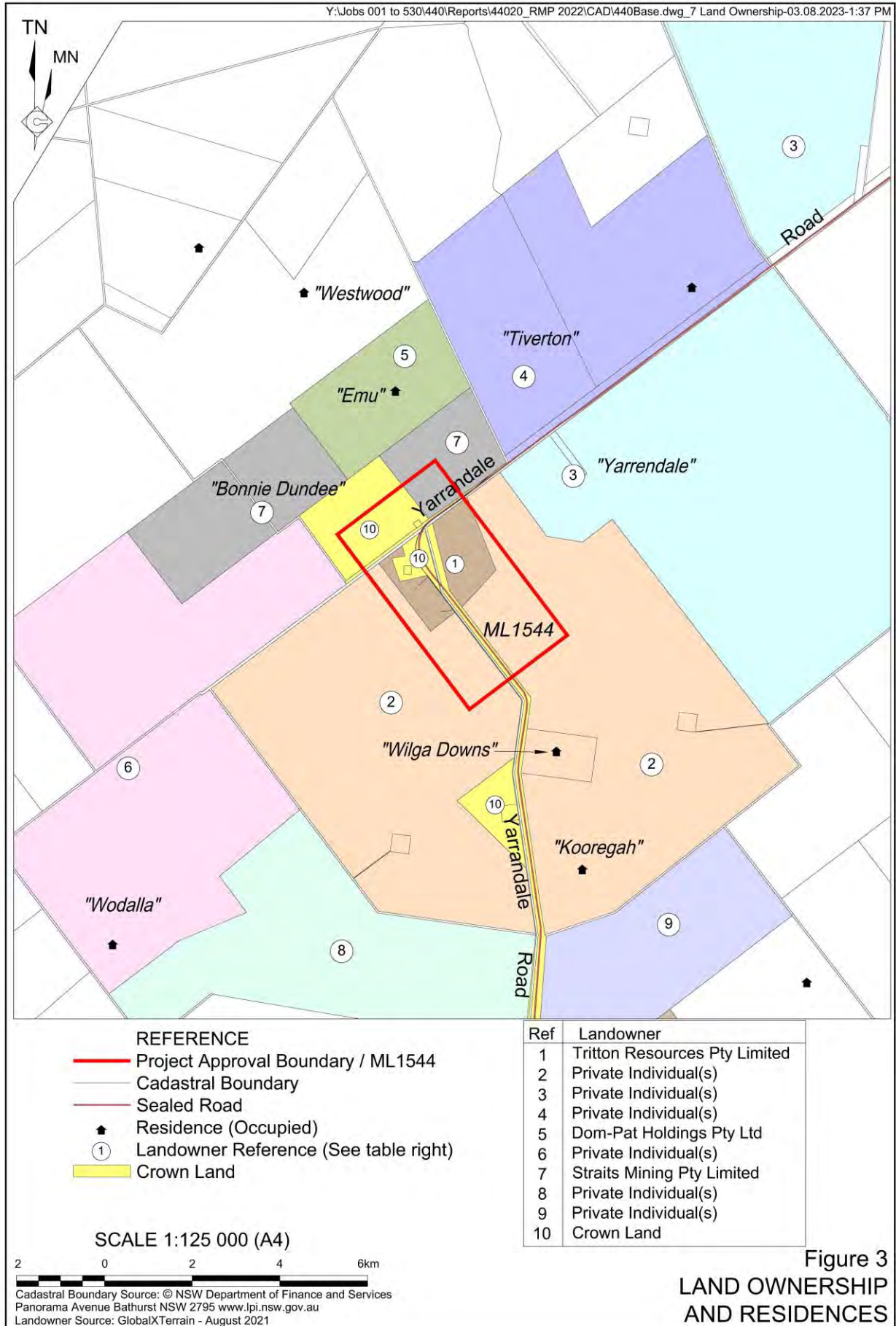
Historical land use within and in the vicinity of the Mine Site and the Tritton Copper Operations is discussed in Section 1.1.1.

Proposed final land uses for the Mine Site are detailed in Section 2 of this RMP. In summary, it is proposed that final land uses will consist of mixed vegetation commensurate with surrounding land uses and capable of supporting light agricultural grazing.

### 1.3.1 Land Ownership and Land Use Figures

**Figure 3** presents land ownership for areas within and surrounding the Mine Site. **Figure 4** presents land uses in the vicinity of the Mine Site. **Figure 5** presents vegetation communities within the Mine Site and within the surrounding region. **Figure 6** presents land zoning in the vicinity of the Mine Site.







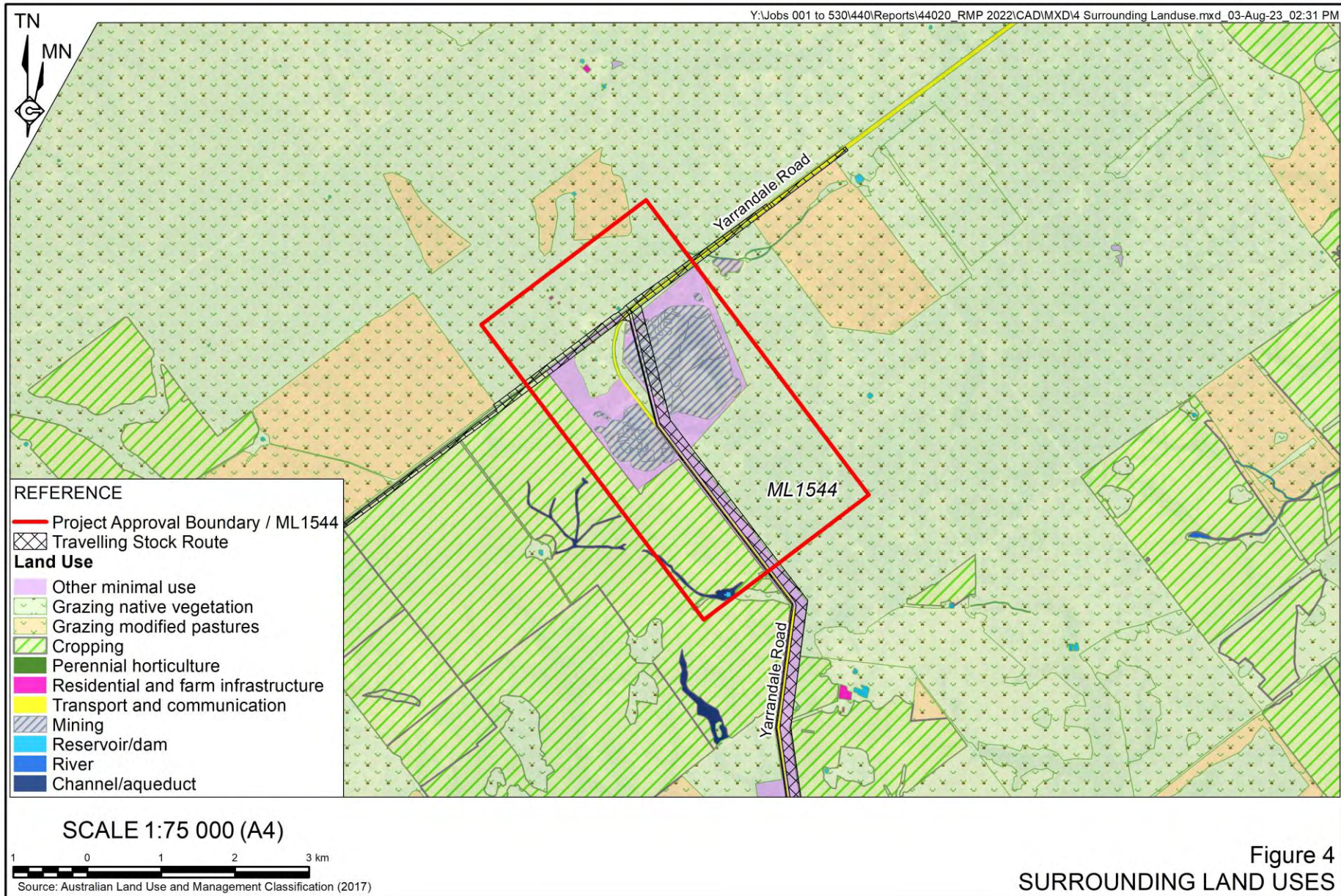


Figure 4  
**SURROUNDING LAND USES**



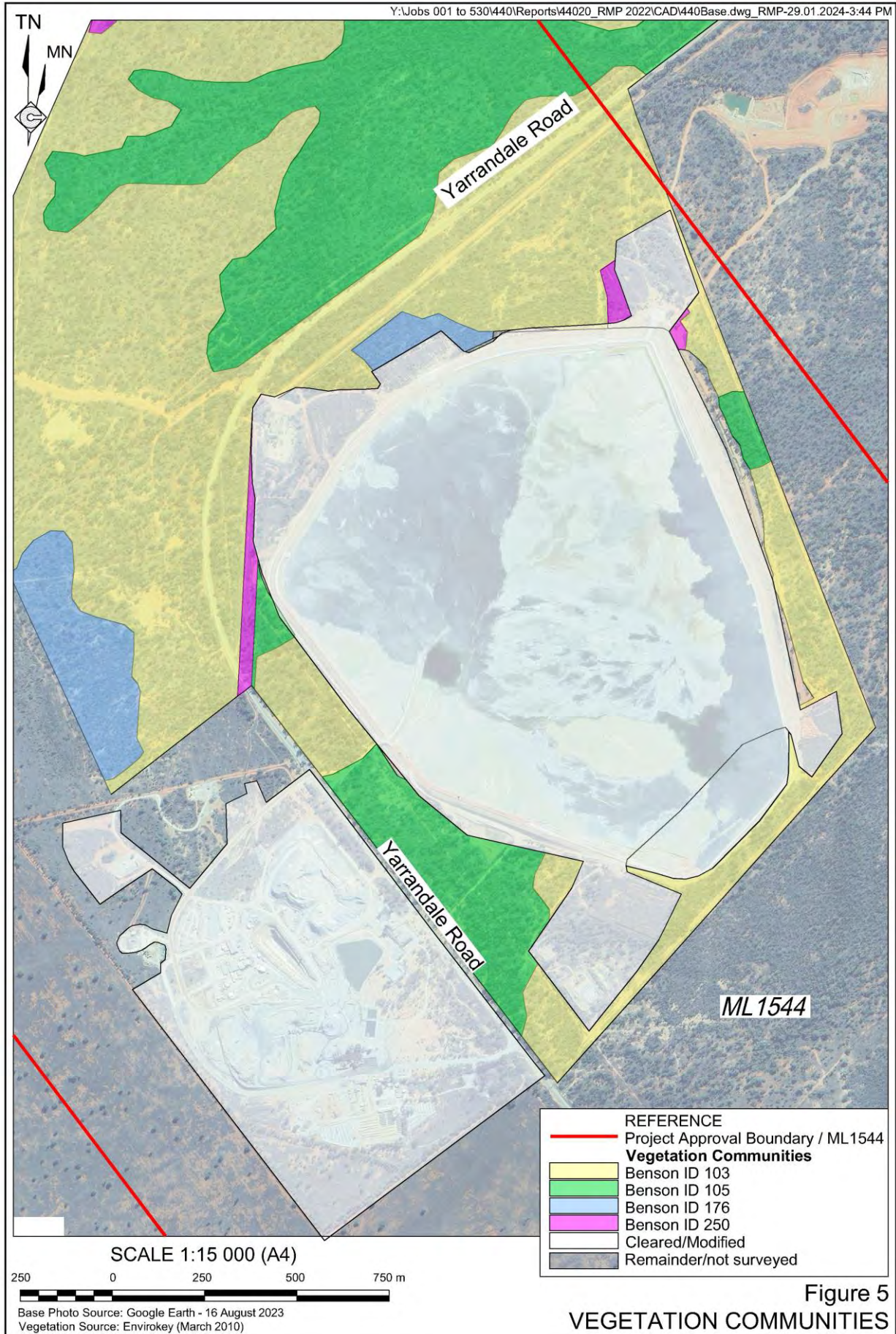


Figure 5  
 VEGETATION COMMUNITIES



