



**NSW  
Resources  
Regulator**

**FWP0001463**

# **MURRAWOMBIE COPPER MINE FORWARD PROGRAM**

**Monday 1 July 2024 to Wednesday 30 June 2027**



## Summary

### DETAIL

<b>Mine</b>	Murrawombie Copper Mine
<b>Reference</b>	FWP0001463
<b>Forward program commencement date</b>	Monday 1 July 2024
<b>Forward program end date</b>	Wednesday 30 June 2027
<b>Forward program revision (if applicable)</b>	
<b>Contact</b>	Mike Fake
<b>Mining leases</b>	MPL 294 (1973), MPL 295 (1973), ML 1280 (1973)
<b>Project location</b>	TRITTON RESOURCES PTY LTD
<b>Date of submission</b>	Friday 30 August 2024

## Important

The department may make the information in your program and any supporting information available for inspection by members of the public, including by publication on its website or by displaying the information at any of its offices. If you consider any part of your program to be confidential, please communicate this to the department via the message function on this submission within the NSW Resources Regulator Portal.

# Three-year forecast – surface disturbance activities

## Project description

The Mine is located approximately 3.5km west of the village of Girilambone within the Bogan LGA in central west NSW. The Mine is owned and operated by Tritton Resources Pty Ltd (the “Company”), a wholly owned subsidiary of Aeris Resources Limited. Operations at the Mine commenced under DA 1/91 and ML 1280 in 1992. DA 1/91 was issued by Bogan Shire Council and does not contain an expiry date. MPL294 and MPL295 are also associated with the Mine but are excluded from this report as no rehabilitation is required to be undertaken within those leases. The Mine operation comprises of an open cut pit, a box cut decline portal to the Murrawombie underground mine, a heap leach copper extraction circuit and maintenance and administrative activities. Mine ore is transported to the ROM pad at the surface where it is stored prior to being hauled to the Tritton Mine for processing via Yarrandale Rd. The Mine is the base for mining operations at the North East (NECM) and Avoca Tank (ATP) Mines.

## Description of surface disturbance activities

### Exploration activities

Nil

### Construction activities

Commencement of the open pit cutback. Construction of the Rock Storage Facility as part of closure of the Heap Leach Pads. Construction of a ROM Pad within the extent of the approved Southern Waste Rock Emplacement area. Minor changes to surface infrastructure, including a go-bay, workshops, and realignment of internal roads, all within existing or historical disturbance areas. Installation of new pipeline to connect to Constellation mine (when approved)

### Mining schedule

Mining development method and sequencing and general mine features.

Underground mining operations will cease during year 1 as production/mining of the cutback intensifies.

Areas identified for emplacements, the sequencing of emplacements, construction, and management.

Waste rock mined during the cutback will be used to construct a new ROM Pad and the Rock Storage Facility. NAF waste rock will be used to construct cells, including embankments and lining, for placement of PAF material. The outer embankments will be constructed in combination with adjustments to the current Heap Leach Pads to facilitate landform design. Following placement of PAF material, a final layer of NAF will be placed to form the basis of the final capping layers. Final designs for the upper capped surface, including surface water management, are currently in preparation.

Processing infrastructure activities and the location of tailings facilities and schedule for emplacement.

No further processing and/or emplacement is anticipated to occur. It should be noted that all Reject Material and Product identified under Key Production Milestones is generated at Tritton Copper Mine.

Waste disposal and materials handling operations.

All waste generated on site is transferred to dedicated storage facilities at MCM or TCM sites for temporary storage / handing / treatment prior to lawful disposal. More information is presented in the reporting for TCM.

### Key production milestones

MATERIAL	UNIT	YEAR 1	YEAR 2	YEAR 3
<b>Stripped topsoil</b> <small>(if applicable)</small>	(m <sup>3</sup> )	0	0	0
<b>Rock/overburden</b>	(m <sup>3</sup> )	2,261,597	3,251,521	100,516
<b>Ore</b>	(Mt)	0.29	0.63	0.38
<b>Reject material<sup>1</sup></b>	(Mt)	0.27	0.58	0.35
<b>Product</b>	(Mt)	0.01	0.01	0.01

<sup>1</sup> This includes coarse rejects, tailings and any other wastes resulting from beneficiation.

# Three-year rehabilitation forecast

## Rehabilitation planning schedule

### Rehabilitation planning schedule

- HLP detailed capping design (ongoing - complete 24/25) - Post Closure Water Management Study (Aim complete 25/26) - relies on current Site Wide Water Balance Model. Anticipated that the results will inform post closure water management / licencing requirements. - Development of program for seed collection/storage and investigation into propagation methods (e.g. on-site nursery or contractor) (Aim complete 25/26) - Commenced geotech assessment for final void / hlp (complete 24/25)

### Stakeholder consultation

Ongoing general consultation as part of CCC meetings.

### Rehabilitation studies, risk assessments and/or design work

Year 1 - Geotech Stability Assessment and Surface Water Management Assessment for NECM in response to NCTE0014657 (complete 24/25) - results may be used to inform rehab at MCM WRE - LEM (complete 24/25) currently in preparation for MCM and NECM WREs. Investigation into additional data (e.g. LiDAR) for refinement of models. Once model parameters are further developed then will be applied to TCM. - Site Wide Water Balance Model (all sites) (Complete 24/25) - Post Closure Water Management Study (Aim complete 25/26) - relies on current Site Wide Water Balance Model - Hydromulch Trials (Site to be confirmed) (Ongoing) Year 2 - Biennial Rehabilitation Monitoring Campaign (25/26) - Post Closure Water Management Study (Complete 25/26) - relies on current Site Wide Water Balance Model

## Rehabilitation research and trials

RRT NUMBER	PROJECT/TRIAL NAME	OBJECTIVE OF TRIAL/PROJECT	METHODOLOGY	EXPECTED DATE OF COMPLETION	STATUS
------------	--------------------	----------------------------	-------------	-----------------------------	--------

FWP0001  
463

## Rehabilitation maintenance and corrective actions

Remediation of failed vegetation development on the MCM WRE may commence during the reporting period.

## Rehabilitation schedule

Inspection of water management infrastructure prior to surface disturbance activities. Stripping/salvage of any rehabilitation materials within areas identified for disturbance. Update of stockpile registers and ensure appropriate stabilisation measures are used. Decommissioning of infrastructure within the footprint of the Rock Storage Facility. Update/maintain records associated with decommissioning / disposal.

## Subsidence remediation for underground operations

Nil

## Progressive mining and rehabilitation statistics

### Three-yearly forecast cumulative disturbance and rehabilitation progression

FORECAST	UNIT	YEAR 1	YEAR 2	YEAR 3
<b>A Total surface disturbance footprint</b>	(ha)	234.16	234.16	234.16
<b>B Total active disturbance</b>	(ha)	190.93	190.93	190.93
<b>P Total new area of land proposed for active rehabilitation</b>	(ha)	0	0	0

### Rehabilitation key performance indicators (KPIs)

FORECAST	UNIT	YEAR 1	YEAR 2	YEAR 3
<b>O Total new active disturbance area</b>	(ha)	8.08		
<b>P Total new area of land proposed for active rehabilitation during the reporting period</b>	(ha)			
<b>Q Annual rehabilitation to disturbance ratio</b>				



## Attachment 1 – Reporting Definitions

REPORTING CATEGORY	DEFINITION
<p><b>A</b> Total disturbance footprint – surface disturbance</p>	<p>All areas within a mining lease that either have at some point in time or continue to pose a rehabilitation liability due to surface disturbance activities.</p> <p>The total disturbance footprint is the sum of the total active disturbance, decommissioning, landform establishment, growth medium development, ecosystem and land use establishment, ecosystem and land use development and rehabilitation completion (see definitions below).</p> <p>Underground mining operations should not include the footprint of underground mining areas/subsidence management areas in the total disturbance footprint.</p>
<p><b>B</b> Total active disturbance</p>	<p>Includes on-lease exploration areas, stripped areas ahead of mining, infrastructure areas, water management infrastructure, sewage treatment facilities, topsoil stockpile areas, access tracks and haul roads, active mining areas, waste rock emplacements (active/unshaped/in or out-of-pit), tailings dams (active/unshaped/uncapped) and temporary stabilised areas (e.g. areas sown with temporary cover crops for dust mitigation and temporary rehabilitation).</p>
<p><b>C</b> Rehabilitation – land preparation</p>	<p>Includes the sum of all disturbed land within a mining lease that have commenced any, or all, of the following phases of rehabilitation – decommissioning, landform establishment and growth medium development.</p> <p>Refer to the glossary of terms in this document for the definition of these phases of rehabilitation.</p>
<p><b>D</b> Ecosystem and land use establishment</p>	<p>Includes the area which has been seeded/planted with the target vegetation species for the intended final land use. However, vegetation has not matured to a stage where it can be demonstrated that it will be sustainable for the long term and or require only a maintenance regime consistent with target reference/analogue sites.</p> <p>Typically, rehabilitation areas would be in this phase for at least two years (and usually more) before rehabilitation can be classified as being in the ecosystem and land use development phase. This phase does not apply to infrastructure areas that are being retained as part of final land use for the site.</p>

REPORTING CATEGORY	DEFINITION
O	The area of any new active disturbance that will be created during the next three years, as defined under definition A1 (definition A1 Table 5).
P	The sum of any new rehabilitation to be commenced in the next three years. These areas may be in the phases “Rehabilitation - Land Preparation” or the “Ecosystem & Land Use Establishment” (definitions C & D in Table 5).
Q	The rehabilitation to disturbance ratio (S / R) indicates how many hectares of new rehabilitation are undertaken for each hectare of land disturbed during the three years. A ratio of 1/1 indicates that the area of new rehabilitation and disturbance in that period are the same.

## Attachment 2 – Definitions

WORD	DEFINITION
<b>Active</b>	In the context of rehabilitation, land associated with mining domains is considered 'active' for the period following disturbance until the commencement of rehabilitation.
<b>Active mining phase of rehabilitation</b>	In the context of rehabilitation, the active mining phase of rehabilitation constitutes the rehabilitation activities undertaken during mining operations such as salvaging and managing soil resources, salvaging habitat resources, and native seed collection. This phase also includes management actions taken during operations to manage risks to rehabilitation and enhance rehabilitation outcomes such as selective handling of waste rock and management of tailings emplacements.
<b>Analogue site</b>	In the context of rehabilitation, an analogue site is a 'reference site' that represents an example of the defining characteristics (such as vegetation composition and structure or agricultural productivity) of the final land use. Characteristics of analogue sites can be assessed to develop the rehabilitation objectives and completion criteria for final land use domains.
<b>Annual rehabilitation report and forward program</b>	As described in the Mining Regulation 2016.
<b>Annual reporting period</b>	As defined in the Mining Regulation 2016.
<b>Closure</b>	A whole-of-mine-life process, which typically culminates in the relinquishment of the mining lease. It includes decommissioning and rehabilitation to achieve the approved final land use(s).
<b>Decommissioning</b>	The process of removing mining infrastructure and removing contaminants and hazardous materials.
<b>Decommissioning Phase of Rehabilitation</b>	Activities associated with the removal of mining infrastructure and removal and/or remediation of contaminants and hazardous materials. In the context of the rehabilitation management plan this phase of rehabilitation may also include studies and assessments associated with decommissioning and demolition of infrastructure or works carried out to make safe or 'fit for purpose' built infrastructure to be retained for future use(s) following lease relinquishment.

<b>WORD</b>	<b>DEFINITION</b>
<b>Department</b>	The Department of Regional NSW.
<b>Disturbance</b>	See Surface Disturbance.
<b>Disturbance area</b>	<p>An area that has been disturbed and that requires rehabilitation.</p> <p>This may include areas such as on-licence exploration areas, stripped areas ahead of mining, infrastructure areas, water management infrastructure, sewage treatment facilities, topsoil stockpile areas, access tracks and haul roads, active mining areas, waste emplacements (active/unshaped/in or out-of-pit), tailings dams (active/unshaped/uncapped), and areas requiring rehabilitation that are temporarily stabilised (i.e. managed to minimise dust generation and/or erosion).</p>
<b>Domain</b>	<p>An area (or areas) of the land that has been disturbed by mining and has a specific operational use (mining domain) or specific final land use (final land use domain). Land within a domain typically has similar geochemical and/or geophysical characteristics and therefore requires specific rehabilitation activities to achieve the associated final land use.</p>
<b>Ecosystem and Land Use Development</b>	<p>This phase of rehabilitation consists of the activities to manage maturing rehabilitation areas on a trajectory to achieving the approved rehabilitation objectives and completion criteria.</p> <p>For vegetated land uses this phase may include processes to develop characteristics of functional self-sustaining ecosystems, such as nutrient recycling, vegetation flowering and reproduction, and increasing habitat complexity, and development of a productive, self-sustaining soil profile.</p> <p>This phase of rehabilitation may include specific vegetation management strategies and maintenance such as tree thinning, supplementary plantings and weed management.</p>
<b>Ecosystem and Land Use Establishment</b>	<p>This phase of rehabilitation consists of the processes to establish the approved final land use following construction of the final landform.</p> <p>For vegetated land uses this rehabilitation phase includes establishing the desired vegetation community and implementing land management activities such as weed control. This phase of rehabilitation may also include habitat augmentation such as installation of nest boxes.</p>
<b>Exploration</b>	Has the same meaning as that term under the State Environmental Planning Policy (Mining, Petroleum Production and Extractive Industries) 2007.

WORD	DEFINITION
<b>Final landform and rehabilitation plan</b>	As defined in the Mining Regulation 2016.
<b>Final land use</b>	As defined in the Mining Regulation 2016.
<b>Form and way</b>	Means the form and way approved by the Secretary. Approved form and way documents are available on the Department’s website.
<b>Growth Medium Development</b>	<p>This phase of rehabilitation consists of activities required to establish the physical, chemical and biological components of the substrate required to establish the desired vegetation community (including short lived pioneer species).</p> <p>This phase may include spreading the prepared landform with topsoil and/or subsoil and/or soil substitutes, applying soil ameliorants to enhance the physical, chemical and biological characteristics of the growth media, and actions to minimise loss of growth media due to erosion.</p>
<b>Habitat</b>	Has the same meaning as that term under the <i>Biodiversity Conservation Act 2016</i> and the <i>Fisheries Management Act 1994</i> (as relevant).
<b>Indicator</b>	An attribute of the biophysical environment (e.g. pH, topsoil depth, biomass) that can be used to approximate the progression of a biophysical process. It can be measured and audited to demonstrate (and track) the progress of an aspect of rehabilitation towards a desired completion criterion (i.e. defined end point). It may be aligned to an established protocol and used to evaluate changes in a system.
<b>Land</b>	As defined in the <i>Mining Act 1992</i> .
<b>Landform Establishment</b>	<p>This phase of rehabilitation consists of the processes and activities required to construct the final landform.</p> <p>In addition to profiling the surface of rehabilitation areas to the approved final landform profile this phase may include works to construct surface water drainage features, encapsulate problematic materials such as tailings, and prepare a substrate with the desired physical and chemical characteristics (e.g. rock raking or ameliorating sodic materials).</p>
<b>Large mine</b>	As defined in the Mining Regulation 2016.
<b>Lease holder</b>	The holder of a mining lease.

WORD	DEFINITION
<b>Life of mine</b>	The timeframe of how long a mine is approved to mine, from commencement to closure.
<b>Mine rehabilitation portal</b>	<p>Means the NSW Resources Regulator’s online portal that lease holders must use (via a registered account) to:</p> <ul style="list-style-type: none"> <li>■ upload rehabilitation geographical information system (GIS) spatial data</li> <li>■ develop rehabilitation GIS spatial data (using online tracing functions)</li> <li>■ generate rehabilitation plans and rehabilitation statistics using the map viewer and Rehabilitation Key Performance Indicator functionalities.</li> </ul> <p>Data submitted to the mine rehabilitation portal is collated in a centralised geodatabase for use by the NSW Resources Regulator to regulate rehabilitation performance of lease holders.</p>
<b>Mining area</b>	As defined in the <i>Mining Act 1992</i> .
<b>Mining domain</b>	A land management unit with a discrete operational function (e.g. overburden emplacement), and therefore similar geophysical characteristics, that will require specific rehabilitation treatments to achieve the final land use(s).
<b>Mining land</b>	As defined in the <i>Mining Act 1992</i> .
<b>Native vegetation</b>	Has the same meaning as that term under section 60B of the <i>Local Land Services Act 2013</i> .
<b>Overburden</b>	Material overlying coal or a mineral deposit.
<b>Performance indicator</b>	An attribute of the biophysical environment (for example pH, slope, topsoil depth, biomass) that can be used to demonstrate achievement of a rehabilitation objective. It can be measured and audited to demonstrate (and track) the progress of an aspect of rehabilitation towards a desired completion criterion, that is, a defined end point. It may be aligned to an established protocol and used to evaluate changes in a system.

WORD	DEFINITION
<b>Phases of rehabilitation</b>	The stages and sequences of actions required to rehabilitate disturbed land to achieve the final land use. The phases of rehabilitation are: <ul style="list-style-type: none"> <li>■ active mining</li> <li>■ decommissioning</li> <li>■ landform Establishment</li> <li>■ growth medium development</li> <li>■ ecosystem and land use establishment</li> <li>■ ecosystem and land use development.</li> </ul>
<b>Progressive rehabilitation</b>	The progress of rehabilitation towards achieving the approved rehabilitation completion criteria. This may be described in terms of domains, phases, performance indicators and rehabilitation completion criteria.
<b>Rehabilitation Completion</b>	The final phase of rehabilitation when a rehabilitation area has achieved the approved rehabilitation objectives and rehabilitation completion criteria for the final land use. Rehabilitation areas may be classified as complete when the NSW Resources Regulator has determined in writing that the relevant rehabilitation obligations have been fulfilled following submission of <i>Form ESF2 Rehabilitation completion and/or review of rehabilitation cost estimate</i> application by the lease holder.
<b>Rehabilitation Completion criteria</b>	As defined in the Mining Regulation 2016.
<b>Rehabilitation cost estimate</b>	As defined in the Mining Regulation 2016.
<b>Rehabilitation management plan</b>	As defined in the Mining Regulation 2016.
<b>Rehabilitation objectives</b>	As defined in the Mining Regulation 2016.
<b>Rehabilitation risk assessment</b>	As defined in the Mining Regulation 2016.
<b>Rehabilitation schedule</b>	The defined timeframes for progressive rehabilitation set out in the forward program.

WORD	DEFINITION
<b>Relevant stakeholders</b>	<p>Means any persons or bodies who may be affected by the mining operations, including rehabilitation, carried out on the lease land, and includes:</p> <ul style="list-style-type: none"> <li>■ the relevant development consent authority</li> <li>■ the local council</li> <li>■ the relevant landholder(s)</li> <li>■ community consultative committee (if required under the development consent) or equivalent consultative group</li> <li>■ affected land holder(s)</li> <li>■ government agencies relevant to the final land use</li> <li>■ affected infrastructure authorities (electricity, telecommunications, water, pipeline, road, rail authorities)</li> <li>■ local Aboriginal communities, and</li> <li>■ any other person or body determined by the Minister to be a relevant stakeholder in relation to a mining lease.</li> </ul>
<b>Risk</b>	The effect of uncertainty on objectives. It is measured in terms of consequences and likelihood (AS/NZS ISO 31000:2009).
<b>Secretary</b>	The Secretary of the Department.
<b>Security deposit</b>	An amount that a mining lease holder is required to provide and maintain under a mining lease condition, to secure funding for the fulfilment of obligations under the lease (including obligations that may arise in the future).
<b>Surface disturbance</b>	Includes activities that disturb the surface of the mining area, including mining operations, ancillary mining activities and exploration.
<b>Tailings</b>	A combination of the fine-grained solid material remaining after the recoverable metals and minerals have been extracted from the mined ore, and any process water <sup>2</sup> .
<b>Waste</b>	Has the same meaning as that term under the <i>Protection of the Environment Operations Act 1997</i> .

<sup>2</sup> Commonwealth of Australia (DITR), 2007. *Tailings Management*.



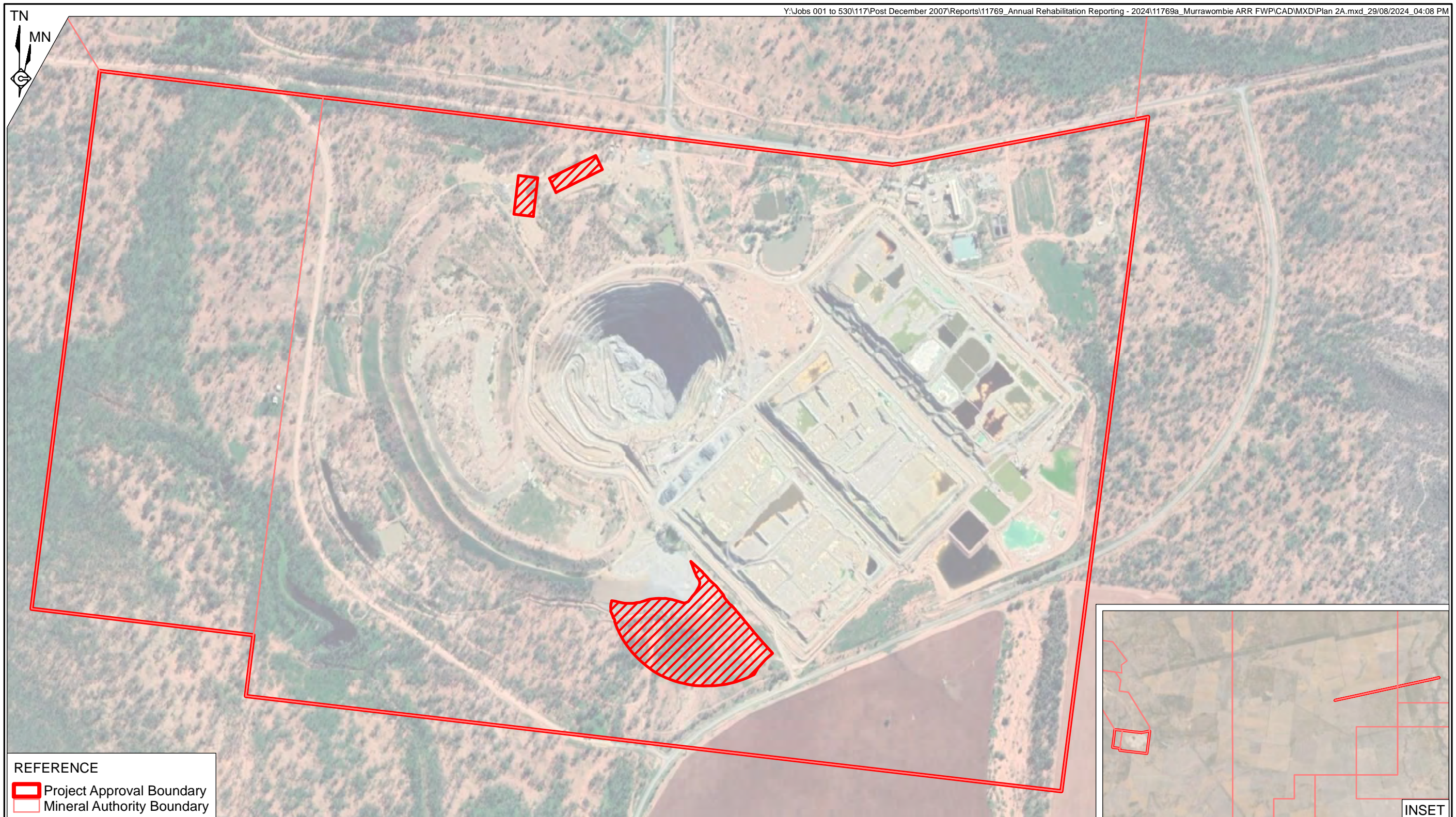
## Attachment 3 – Plans



Plan 2A attachment not provided.

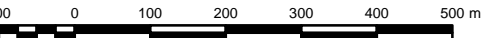
Plan 2B attachment not provided.



Plan 2C attachment not provided.

Forward Program (LARGE MINE) v2.1



**REFERENCE**  
 Project Approval Boundary  
 Mineral Authority Boundary

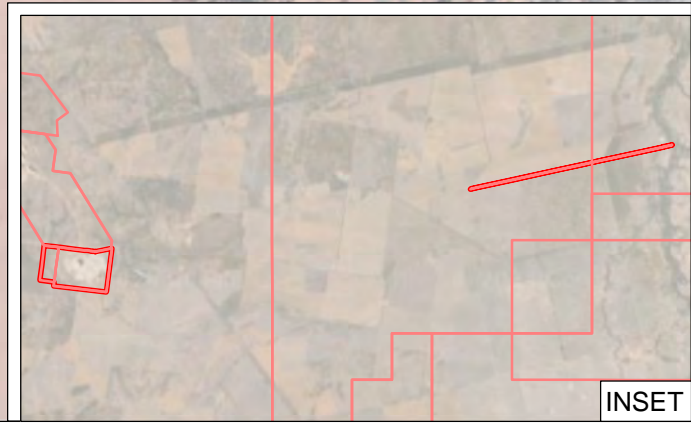
**SCALE 1:10 000 (A3)**  
  
 Source: Google Earth - 11 May 2020

**Forecast Data**  
 Forecast Disturbance  
 Forecast Land Prepared for Rehabilitation

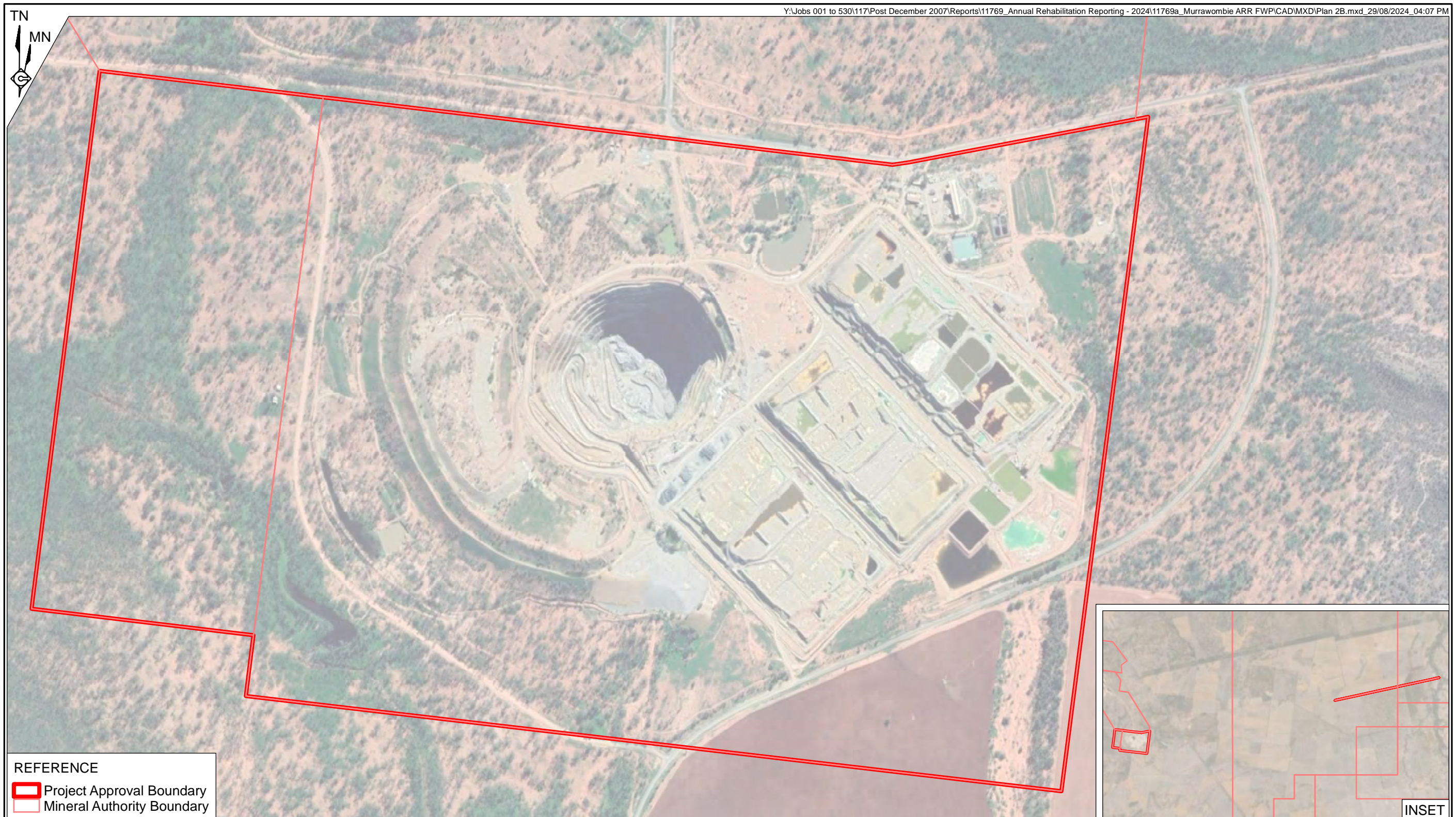
Mine Name  
 Plan Name  
 Anticipated Year of Relinquishment  
 Date Plan Created  
 Data Theme Submission ID Numbers

Murrawombie Copper Mine  
 Plan 2A Mining and  
 Rehabilitation - Year 1  
 2033  
 28 August 2024  
 8449


**Plan 2A  
 MINING AND REHABILITATION  
 - YEAR 1**




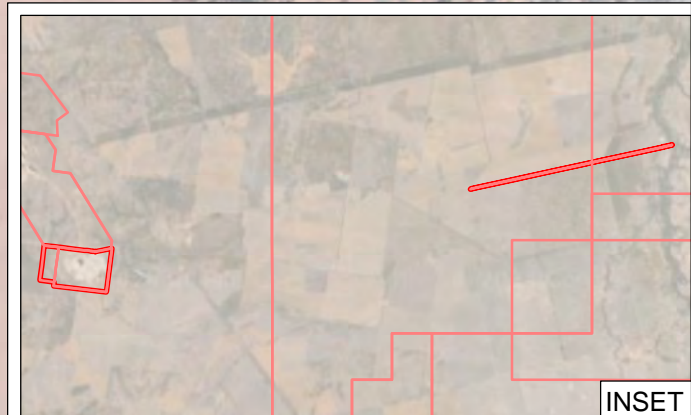
INSET



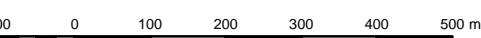
**REFERENCE**

 Project Approval Boundary

 Mineral Authority Boundary





**SCALE 1:10 000 (A3)**



Source: Google Earth - 11 May 2020

**Forecast Data**

 Forecast Disturbance

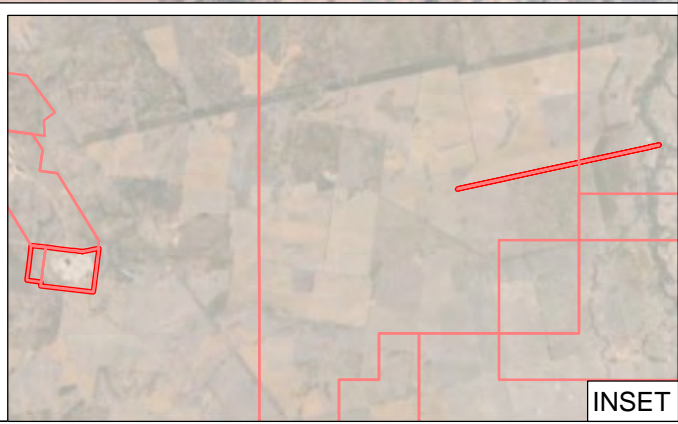
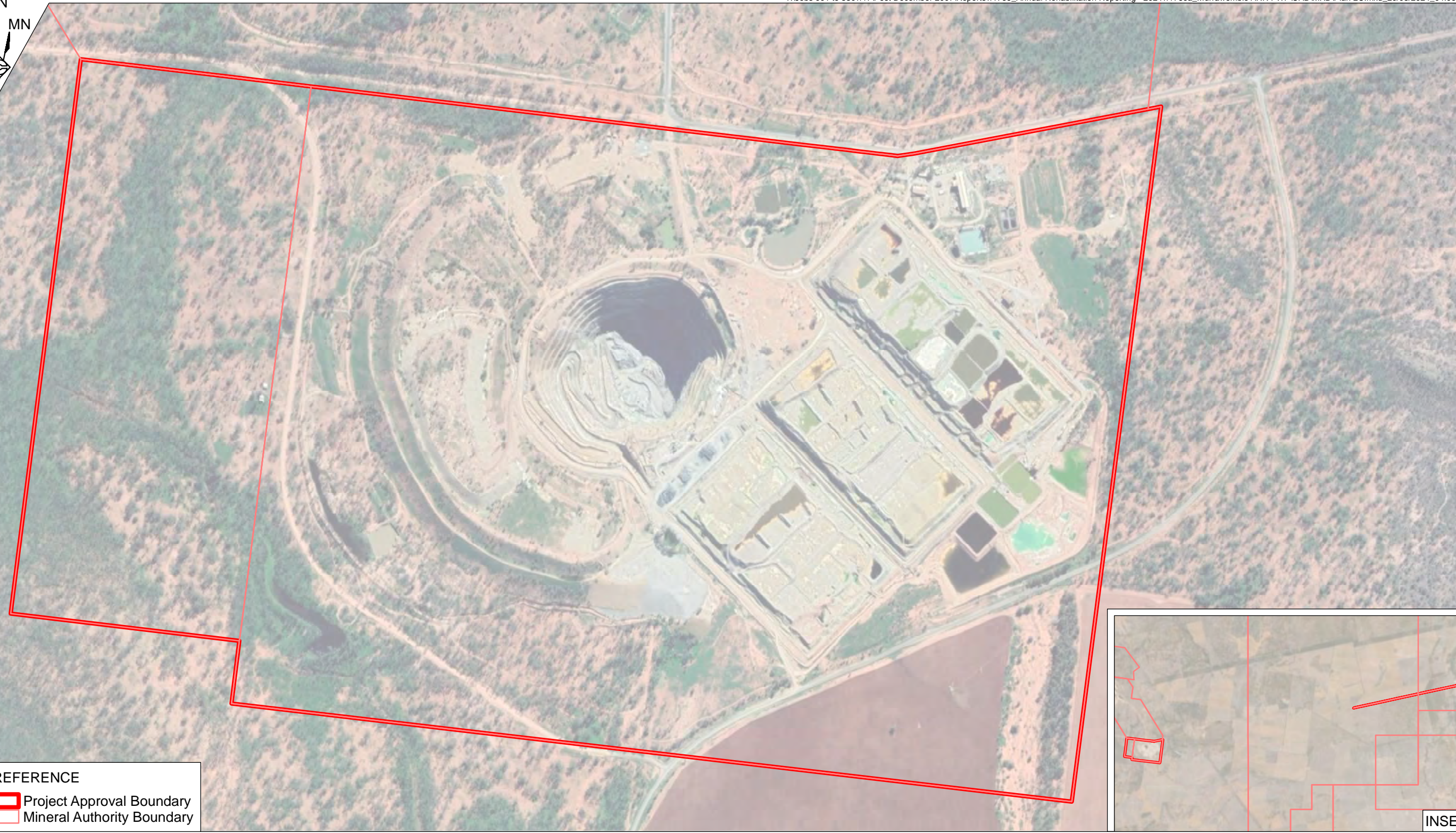
 Forecast Land Prepared for Rehabilitation

Mine Name  
Plan Name

Anticipated Year of Relinquishment  
Date Plan Created  
Data Theme Submission ID Numbers


Murrawombie Copper Mine  
Plan 2B Mining and  
Rehabilitation - Year 2  
2033  
28 August 2024  
8450


**Plan 2B  
MINING AND REHABILITATION  
- YEAR 2**



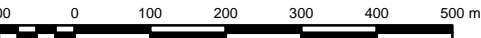
INSET

**REFERENCE**

 Project Approval Boundary


 Mineral Authority Boundary


**SCALE 1:10 000 (A3)**



Source: Google Earth - 11 May 2020

**Forecast Data**

 Forecast Disturbance

 Forecast Land Prepared for Rehabilitation

Mine Name  
Plan Name

Anticipated Year of Relinquishment  
Date Plan Created  
Data Theme Submission ID Numbers

Murrawombie Copper Mine  
Plan 2C Mining and  
Rehabilitation - Year 3  
2033  
28 August 2024  
8451

**Plan 2C  
MINING AND REHABILITATION  
- YEAR 3**